

# Real-World Experience With Pacritinib in the US

**John Mascarenhas, MD**

Professor of Medicine

Icahn School of Medicine at Mount Sinai

New York, NY



# Real-World Treatment Patterns and Outcomes in Patients With Myelofibrosis Treated With Pacritinib in the United States

## Methods

- Patients diagnosed with MF (ICD-10: 75.81, D47.4) and treated with pacritinib between June 2022 and August 2023 were located in the Integra-PrecisionQ database, an anonymized and harmonized dataset including EMR and practice management data
- Treatment-related outcomes included change in platelet counts and hemoglobin from pacritinib initiation (ie, index) and 30-day intervals post-index
- OS was assessed from the time of pacritinib initiation through the end of the observation period (October 2023) and estimated using the Kaplan–Meier method

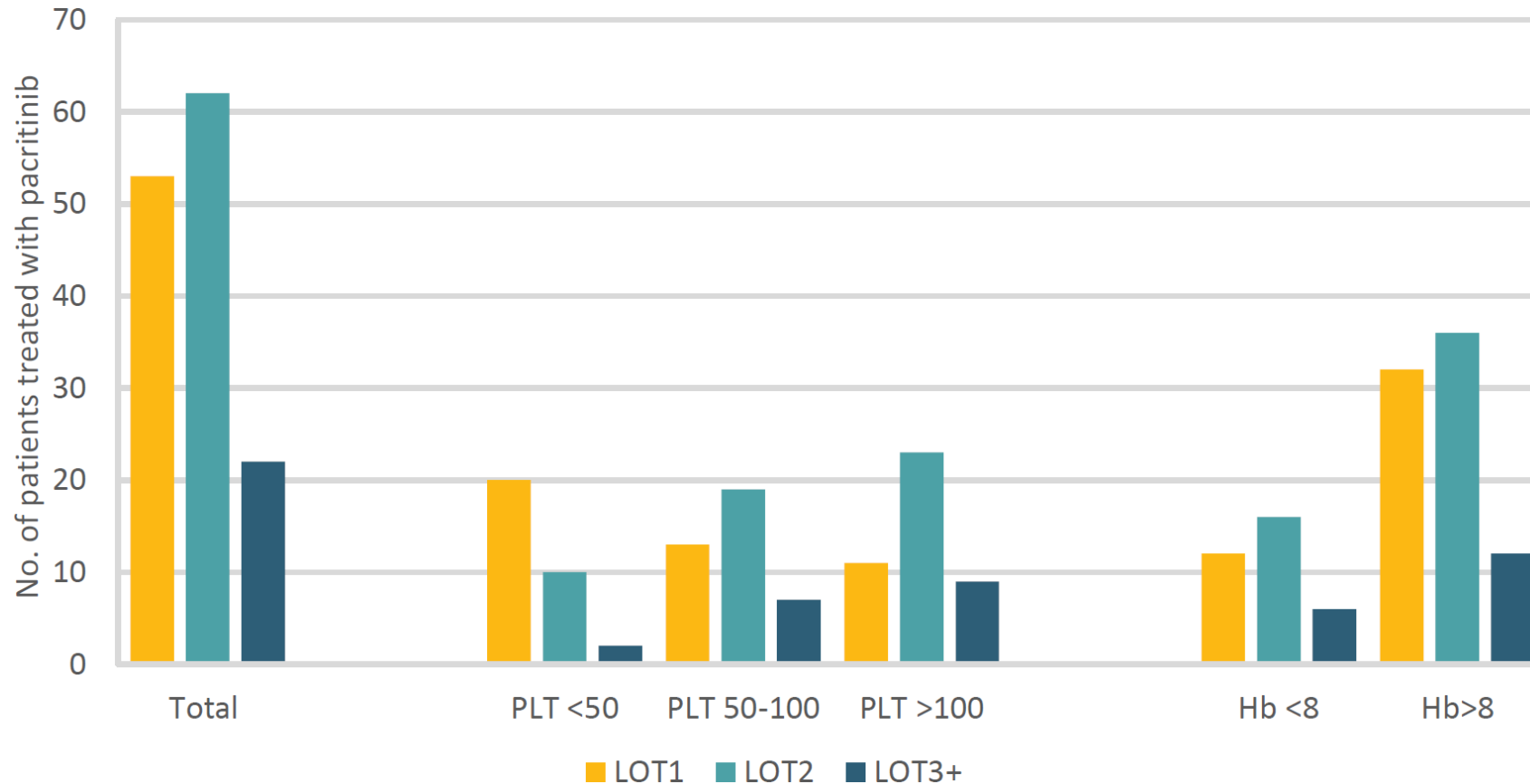
# Index Characteristics

Characteristic	Patients with MF treated with pacritinib (N = 142)
Severe thrombocytopenia (platelet count $<50 \times 10^9/L$ ), %	28.5
Severe anemia (hemoglobin $<8.0$ g/dL), %	29.0
Sex, male, %	60
Race, white, %	66
Age, years, median (IQR)	72 (64–79)
Time from MF diagnosis to pacritinib initiation, months, median (IQR)	13.4 (0.6–49.6)
Follow-up time from index, months, median (IQR)	6 (4–11)

IQR, interquartile range; MF, myelofibrosis.

Mascarenhas J, et al. 2024 European Hematology Association Annual Meeting; P1072.

# Pacritinib Treatment by LOT, Platelet Count,<sup>a</sup> and Hemoglobin Values<sup>b</sup>



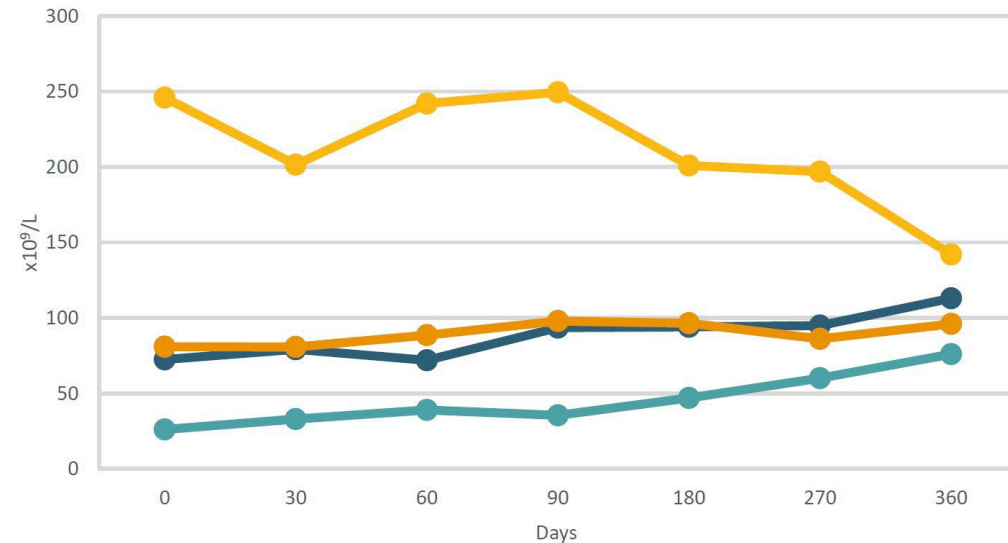
<sup>a</sup>PLT values expressed as  $\times 10^9/L$ . <sup>b</sup>Hb values expressed as g/dL.

Hb, hemoglobin; LOT, line of treatment; PLT, platelet count.

Mascarenhas J, et al. 2024 European Hematology Association Annual Meeting; P1072.

# Pacritinib Treatment and Hematologic Outcomes

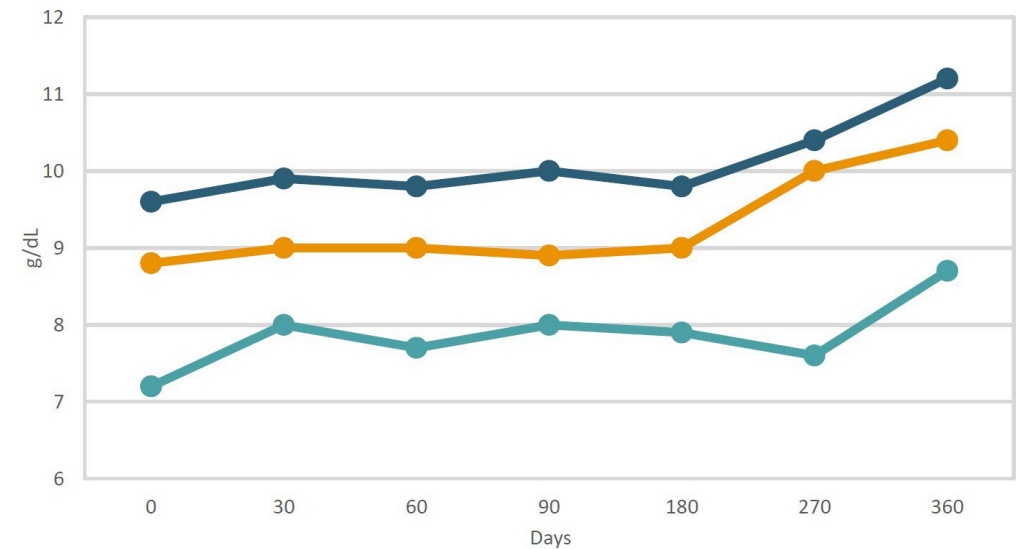
## PLT Over Time by Baseline PLT



	0	30	60	90	180	270	360
Overall (n)	119	102	88	78	68	45	15
PLT <50 (n)	34	30	25	22	19	12	6
PLT 50-100 (n)	40	36	28	24	24	13	4
PLT >100 (n)	45	36	35	32	25	20	5

Median PLT in patients with PLT <100 × 10<sup>9</sup>/L at index demonstrated an early increase within 30 days that was sustained throughout the observation period

## Hb Concentration Over Time by Baseline Hb Value



	0	30	60	90	180	270	360
Overall (n)	119	102	88	79	80	45	15
Hb <8 (n)	35	31	26	23	22	11	4
Hb ≥8 (n)	84	71	62	56	58	34	11

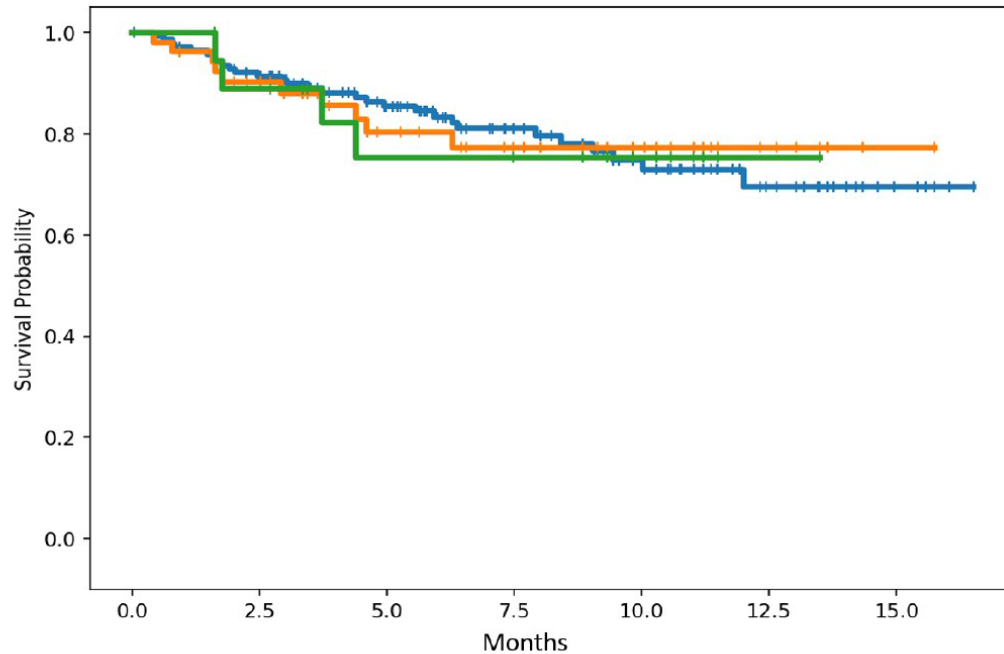
An early increase in median Hb was noted and sustained throughout the observation period, with a more profound increase of nearly 1 g/dL by day 30 in patients with Hb <8.0 g/dL at index

Hb, hemoglobin; PLT, platelet count.

Mascarenhas J, et al. 2024 European Hematology Association Annual Meeting; P1072.

# Pacritinib Treatment and OS

OS by LOT and PLT (June 2022–October 2023)



No. at risk:

	0.0	2.5	5.0	7.5	10.0	12.5	15.0
Overall	142	122	90	60	40	18	5
LOT 1	43	43	29	22	16	6	1
LOT 1 & PLT <50	19	16	11	10	7	1	0

Cohort	12-month OS probability (95% CI)
Overall (N = 142)	64.9% (56.8–79.0)
Patients treated with 1L pacritinib (n = 52)	77.3% (61.5–87.3)
Patients treated with 1L pacritinib with PLT <50 × 10 <sup>9</sup> /L (n = 19)	75.2% (46.3–90.0)
Patients treated with 2L pacritinib (n = 59)	72.1% (42.4–88.2)
Patients treated with ruxolitinib prior to pacritinib (n = 84)	65.3% (47.2–78.5)

# Summary

- Pacritinib is well tolerated
- Use 1L-3L in patients with low PLT and Hb
- Affording stability in PLT, Hb, and even survival